

FREE

for KAUA'I

inside

4



"The canoe keeps people honest"



9

Arthur Budd—
Remembering WWII

*For Kaua'i
now on your
mobile device!
forkauaionline.com
is now mobile
friendly!*

www.forkauaionline.com



The Art of Giving

Trust and relationships are everything
see story page 15

Photo by Robert Kennedy

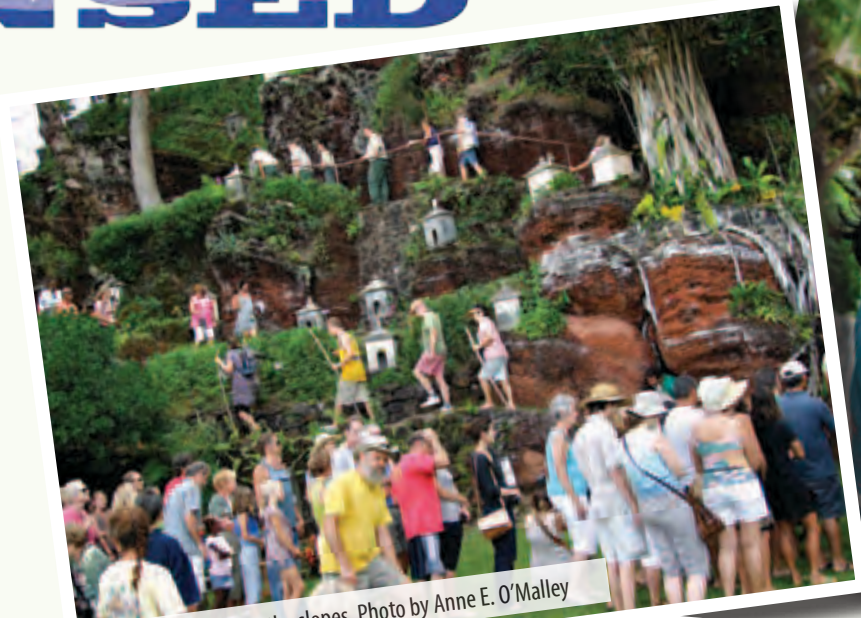
All Local • All Community • All Kaua'i

LENSED

88 Shrines Pilgrimage

by Anne E. O'Malley

About 600 persons attended the 11th annual Pilgrimage for Compassion at the 88 shrines in Lawai Valley, with another roughly 150 volunteers serving tea, baked goods, managing the silent auction, pounding mochi, doing ikebana demonstrations and more. World-renowned shakuhachi Grand Master Riley Lee rendered hauntingly beautiful Japanese flute melodies that echoed off the hills of the valley, as pilgrims zig-zagged upwards past 88 shrines that replicate an ancient Buddhist pilgrimage of 88 shrines in Shikoku, Japan. The center is a non-profit community project that seeks to bring the valley back to prominence as an international center of compassion, education, and cultural understanding.



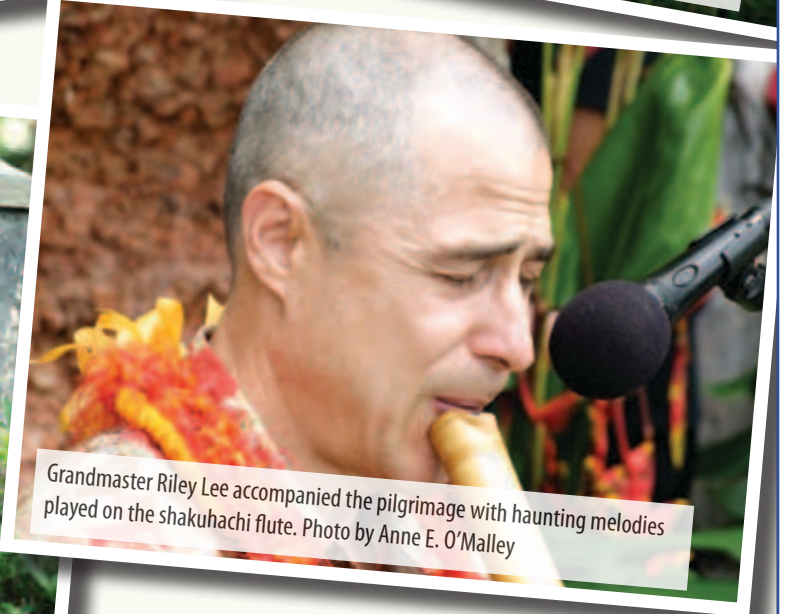
Pilgrims zigzag up the slopes. Photo by Anne E. O'Malley



Lynn Muramoto, head of the center, addressed the pilgrims. Images by Liz



Zoe Harold peers into a shrine. Photo by Mike Teruya



Grandmaster Riley Lee accompanied the pilgrimage with haunting melodies played on the shakuhachi flute. Photo by Anne E. O'Malley



Students of Ke Kula Niihau O Kaua'i offered an oli. L-R: Hiwa Kanahele, Kaohu Niau, Kaiulani Santos, Wailani Castillo-Sutton, Keoki Strickland, Kaleialoha Kanahele-Shintani. Photo by Mike Teruya



Front (l-r): Linda Oshiro, Patricia Yu, Diane Nitta of Taiko Kaua'i. Photo by Mike Teruya

got ads

Want to advertise?
For more information call Barbara at:

338-0111

or
barbara@forkauaionline.com





Jeep



RAM



16TH ANNUAL TOTAL SALE!



King Auto Center would like to invite you to attend our **16th Annual Total Sale!** This exciting event only comes once a year and now is your time to save like never before! Choose from over \$3,000,000 worth of new and pre-owned vehicles during this event.

- **NO NEGOTIATION WILL BE NECESSARY.** Dealer discounts combined with Factory Rebates will save you up to \$10,000. Combine your savings with low APR financing and save even more! All vehicles will be clearly marked with their original **MSRP** and the **FINAL DISCOUNTED TOTAL SALE PRICE.**
- **SIGN & DRIVE SPECIALS** - That's right just sign your name and drive home in a new Chrysler, Dodge, Jeep, Ram, or Honda vehicle. All in stock vehicles will be deeply discounted during this event.
- **USED CAR BUYERS** - Special purchase vehicles will be sold **starting at \$2,995.** Choose from a tremendous selection of low mileage dealer demos, lease returns, program vehicles, and local one owner trades. Most of these vehicles are still under factory warranty.

2011 DODGE RAM



SAVE OVER
\$10,000

2011 JEEP GRAND CHEROKEE



Pre-Owned Program
SAVE THOUSANDS
Off Lease Vehicles

2011 HONDA CIVIC



SAVE OVER
\$3,000

WHERE

KING AUTO CENTER

4330 Kukui Grove St.
Lihue, HI 96766
245-4788

WHEN

3 DAYS ONLY

Friday, September 16 • 9am - 7pm
Saturday, September 17 • 9am - 6pm
Sunday, September 18 • 10am - 4pm



BELOW Kelley Blue Book
on **EVERY USED VEHICLE!**
www.kingautocenter.com



Jose Aguayo



Ron Valencia



Vernon Yoshida



John Gillespie



Joy Kagawa



John Borales



Roy Yamashita



Steve Shioi



Lea Ragsac



Tony Cook

**Good News Every Week at
www.forkauaionline.com**

CONTENTS

Keala Kai 4
 Cover Story 5
 BIZ: Kai Kini 8
 Arthur Budd 9
 Native Edibles13
 Island Activities/Dining19
 FIT: Marko Kowalski22
 PROFILE: Joy Kagawa24
 Lifestyles Boutique25
 Calendar30
 Directory/Coupons30

FREE SUBSCRIPTIONS

call 338-0111 or email
 publisher@forkauaionline.com

PUBLISHER

Barbara Bennett
 Phone 338-0111
 Fax 338-0222
 barbara@forkauaionline.com

EDITOR

Anne E. O'Malley
 Phone 742-9587
 anne@forkauaionline.com

CONTRIBUTING WRITERS

Joan Conrow
 Jan TenBruggencate

ADVERTISING

Barbara Bennett, Sales & Marketing
 Director
 338-0111
 barbara@forkauaionline.com

Melinda Uohara, Sales & Marketing
 Manager
 Cell 652-6878
 Office/Fax 245-4648
 melinda@forkauaionline.com

MEDIA PRODUCTIONS

Tine Howard, Videographer
 Chris Jensen, Social Tech

Published by Kaua'i Management Group
 For Kaua'i Magazine, PO Box 956, Waimea, HI 96796

Keala Kai

Article and photos by
 Joan Conrow

Keala Kai sees his art as a direct connection to his culture.

And that's not just because his distinctive drawings so frequently feature the sailing canoes that he considers the core of Polynesian culture. It also has to do with his attitude toward sharing his art, whether as a gift, a donated raffle prize or a silent auction item being sold for a good cause.

"It's what it represents—a very embrace culture, a very giving culture," he explains. "So when I give my canoes away, it not only heals me doing that, but I think it heals the other person, too."

He knows his culture because he was raised old school, by grandparents born in the 1800s. "It's a whole different value system," he says. "My grandfather always told me, 'look up,' and today, too many people are looking down, at their phones."

Kai works primarily in pencil, drawing canoes that are so realistic they could serve as construction blueprints.

"When I draw certain things, I get tired," he says. "The canoes, they exhaust

me because you draw with your mind and not your hands, because you're trying to feel every detail of that canoe."

He knows his subject because he's sailed on Hokulea, the first replica of a traditional voyaging canoe constructed in Hawai'i, and is helping to build Namahoe, Kaua'i's canoe.

"I thought I'd never draw Hokulea," he says. "I've seen so much exploitation of the canoe, I thought I'd never be a part of it with a drawing."

But he relented when Nainoa Thompson, who captained Hokulea on its inaugural voyage to Tahiti, asked him to do it. That drawing became the signature T-shirt for the Polynesian Voyaging Society."

More recently, he was asked to design a shirt for the Society's 2013 worldwide voyage. "I drew Hokulea's mother, like how it would be in the old days, if it was made out of wood instead of fiberglass," he says.

While locals have enthusiastically embraced Kai's art, it isn't quite so popular with tourists. During a brief stint of operating a shop in Kapa'a, Kai and his longtime girl-



Keala Kai with his drawing of a stone adze. Photo by Joan Conrow

friend, Diane Hughes, found that visitors often couldn't relate to his subject matter.

"Locals are amazed, but tourists don't get it," says Hughes, who sells Kai's art primarily at craft fairs. "I've had so many people cry

when they purchased his art work because it relates to something happening in their life. There's a lot of emotion that goes into these drawings, and people feel it."

"This is the real stuff," see Keala page 10

for **KAUAI** MAGAZINE
 Powered by Hawaii Stream

OVER 30% OFF

Weekly on the Web
 www.forkauaionline.com

Full Page **SAVE!** per insertion

Printed Monthly

Half Page **SAVE!** per insertion

Free Classified Ads
 Available Island Wide
 Free Subscriptions
 Call Melinda

CONTACT:
 Melinda Uohara
 Sales & Marketing Manager
 652-6878
 melinda@forkauaionline.com

Offer good thru December 2011 • 1st time advertisers qualify!

Ads are featured online at: www.forkauaionline.com

Cover Story

Hawai'i Community Foundation

A treasure chest of community support

by Anne E. O'Malley

The Kaua'i office of the Hawaii Community Foundation is whisper quiet. You'd think as the local representative of a statewide organization that manages 600 funds —30 of them Kaua'i community specific —and distributes an average of \$54 million annually, that there might be a squeak here or there, or word of a high profile black tie, ball gown and diamonds event, but that's not the case

—and that's what donors like about the foundation.

As Darcie Yukimura, the philanthropic officer of the Kaua'i office explains about the foundation as a whole, "We don't advertise, we're very word of mouth, and that's intentional. The resources we steward need to be spent wisely —trust and relationships are everything."

The Kaua'i office supports people giving funds for Kaua'i and

Niihau, and stewards those funds, so the \$54 million is not actually going out this particular set of doors, so to speak; but even so, a goodly sum is.

There is, for example, the more than \$5 million in grant awards given by the Annie Sinclair Knudsen Memorial Fund that has benefited the Kaua'i community since that fund's inception 22 years ago. It gives grants to organizations that serve our community in culture and arts, education, environment and health and human services and that promote volunteerism, collaboration and have demonstrated organizational and community effectiveness.

Then there's the low-key Kaua'i Aloha Endowment established in 2000 and that within the first two months of opening had aggregated about \$50,000 —in part thanks to generous donors and community leaders and shakers, many of whom attended a \$1,000 a plate fund-raising dinner. Currently numbering over 350 donors, the fund has as its purpose to support projects and programs on Kaua'i

that protect, preserve and enhance the island's natural beauty, promote its culture and arts, and serve the needs of individuals and the community.

Established in 1916, headquartered in Honolulu, the Hawai'i Community Foundation is a statewide, charitable services and grant making institution endowed with contributions from many donors. The Foundation distributes charitable funds to Hawai'i's nonprofit organizations through a variety of programs.

It also serves as a resource on philanthropy and community issues and trends. Some examples include a recent gathering of educators to talk about the state of education —an interest of many of its constituents.

And in 2009, during an economic downturn, Yukimura says, "We gathered funders to talk about how we are doing and what we are doing."

Yukimura, member of a Kaua'i family spanning four generations, came on-board the foundation in 2007; the Kaua'i branch office had existed for 17 years. On her watch, the Kaua'i



Darcie Yukimura, philanthropic officer, HCF. On the cover: Darcie Yukimura and UriMartos, philanthropic services assistant; flowers courtesy of Flowers Forever. Photos by Robert Kennedy

office has garnered 12 new Kaua'i Community-specific funds.

There is perhaps a notion that folks must be wealthy to donate, but two factors Yukimura mentions show that's not necessarily the case.

"We completed a giving study in 2009 that found that across the board, independent of economic status and ethnicity, Hawai'i people give more than any in the nation, and Kaua'i gives more than anyone in the state."

Secondly, Yukimura says, "Most people think you have to have millions to give to foundations. Most of our families do not have millions; they simply have passion and desire."

Yukimura sums up, saying, "Our work is about stories. It may be a story of a family that enjoyed prosperity of some kind or feels love or passion for a partic-

ular area or organization. They come to us and say, 'We want our name to be remembered as our legacy to this community.'

"Our clients are mostly longstanding, deeply rooted in the community. Those people are humble, generous."

As the Kaua'i office moves toward its second decade of serving the people of the Kaua'i community better, Yukimura says, "I'm hoping we can really touch many people out there."

For information on how to contribute to or set up a fund with the Hawai'i Community Foundation, call Darcie Yukimura at 245-4585 or email her at dyukimura@hcf-hawaii.org. To learn more about Hawai'i Community Foundation, visit online at hawaiicomunityfoundation.org

Classy Class of '52 One donor group story

by Anne E. O'Malley



Norman Akita and fellow classmates spearheaded a local fund offering scholarships to Waimea High School graduates. Photo by Anne E. O'Malley

Each year the Hawai'i Community Foundation awards over \$5 million in scholarship awards to students attending college or university in Hawai'i or on the mainland, making the Foundation the second largest private provider of

post-secondary scholarships in the state.

When Millie Wellington, a member of the Waimea High School Class of 1952, called her classmate Norman Akita in April 2010 and suggested giving back to

see Class page 18



Turning 65 and have questions about Medicare?

- What are my options?
- Which plan is right for me?
- Which company will best meet my needs?
- How do I choose?

Humana can help.

We offer a variety of Medicare health plans and the experience to help you find the right Humana plan that meets your needs.

Humana has been serving people just like you with Medicare for over 20 years, and currently provides Medicare health plans, including prescription drug plans, to more than 3.5 million people across the country.

Let's talk.

To arrange a personal consultation, please call us today.

For O'ahu: 808-545-5757

For Neighbor Islands: 1-800-537-3692
(TTY: 711)

8 a.m. to 8 p.m., seven days a week

HUMANA

Humana • Seven Waterfront Plaza • 500 Ala Moana Blvd., Suite 400 • Honolulu, HI 96813

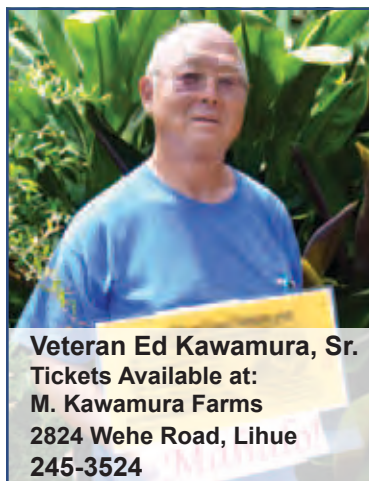
A health plan with a Medicare contract.

Y0040_GHAOC98HH File & Use 12152010



POIPU BAY GOLF COURSE
Where Champions Play

18 championship holes on Kaua'i's sunny southshore
(808) 742-8711 or 1-800-858-6300



Veteran Ed Kawamura, Sr.
Tickets Available at:
M. Kawamura Farms
2824 Wehe Road, Lihue
245-3524

Kauai Veterans Council
Fundraiser 2011

VETERANS HELPING VETERANS

Fundraiser prizes

1st Travel Voucher for \$1,500
2nd Travel Voucher for \$1,500
3rd Travel Voucher for \$1,000
4th Travel Voucher for \$1,000
5th Travel Voucher for \$1,000

other prizes to be announced

Support Our Veterans...
with a Donation of \$5 and WIN!
Drawing on Saturday Nov 5

SCOTTY'S MUSIC

In Kalaheo

332-0090

On Sale!

Yamaha and Casio Electronic Pianos and Keyboards



prices starting at \$199.00

Ukuleles also on sale!

KAUA'I MOKIHANNA FESTIVAL

A CONTEMPORARY
HAWAIIAN
CULTURAL FESTIVAL

SEPT. 18-24, 2011

*Celebrate
the Year
of Hula*



Photo © 2010 Joe Olivas

SCHEDULE OF EVENTS

SUNDAY, SEPT 18

Kapa'a First Hawaiian Church-Service at 10 am

SUNDAY, SEPT 18

Hawaiian Instrumental Competition

'Ilima Terrace/Grand Hyatt Kaua'i Resort & Spa | 7 pm
Call (808) 742-1234 for tickets to this event only

MONDAY, SEPT 19

Kaua'i Composer's Contest and Concert
KCC Performing Arts Center | 7 pm

TUESDAY, SEPT 20

"Eo, E Lili'u" Children's/Youth Music Competition
KCC Performing Arts Center | 9 am

TUESDAY, SEPT 20

"Under the Palms at Wailua" Hula, music, arts & crafts
Aston Aloha Beach Hotel, Wailua | 6 pm

For more information or for individuals requiring an auxiliary aid or additional support to participate call Jodi Omo at 808-246-5515 ten (10) working days before the event



WEDNESDAY, SEPT 21

Hawaiian Cultural Presentation
Maile Beamer-Loo, Hula Preservation Society
Kaua'i Museum | 7 pm

THURSDAY, SEPT 22

Solo/Group Kahiko Nei Hula Competition
Kaua'i Beach Resort | 6 pm

FRIDAY, SEPT 23

Group Auana Hula Competition, Royal Court will attend
Kaua'i Beach Resort | 6 pm

SATURDAY, SEPT 24

Solo Auana Hula Competition & Festival Awards Finale
Kaua'i Beach Resort | 12 noon

FOR TICKETS: Call (808) 652-4497
www.maliefoundation.org

Events sponsored in part by:
Hawai'i Tourism Authority, A&B Foundation, Kukui'ula Development,
QLCC, Hawai'i Community Foundation, Hawaiian Airlines,
and COK Office of Economic Development

Kai Kini Bikini • Taryn Rodighiero

by Leo DuBois

When Taryn Rodighiero first moved to Kaua'i she had a fascination for buying and wearing lots of bikinis. At the point where she had gathered a very substantial collection, Rodighiero decided it was high time to take over a local bikini business and create her own.

Even though the deal fell through, Taryn realized she was very serious about designing and manufacturing her own line of bikini wear. So she and her husband, Tyler,

purchased a couple of high-end sewing machines and quickly set into motion the business of learning the bikini business.

BIZ *of the* MONTH

Without any formal training, Rodighiero went through yards and yards of material before finally learning how to make the perfect bikini. When she finished around 150

bikinis, she called up 50 close friends and held a yard sale completely clearing out everything in stock at a very reasonable dis-

count. Taryn Rodighiero has a college degree and three years of on-the-job experience in sales and business finance, which helped in completing each goal

she set.

Three excellent choices helped move her business forward. First, Rodighiero hired good friend Jeff Gress to design a professional logo that gave her company a smart looking identity. Next, she hired Kaua'i photographer, Emily Helen, to take fashion shots for her advertising, posters and clothing tags.

Finally, Rodighiero created an online store to offer her Kaua'i hand made products to the world. At this writing, the Kai Kini Online store is still under



Taryn Rodighiero of Kai Kini Bikini. Photo by Leo DuBois

construction; however, her Facebook site is available for viewing at www.facebook.com/KaiKini.Kauai.

By creating a smart, colorful company

identity, Rodighiero offered both a quality product and attractive advertising. All she needed to do now was sell it.

see Bikini page 28

Visit

Otsukas and see our new line of bedsets, starting as low as \$799

Our featured summer set below exemplifies simple solid wood Island elegance in a beautiful cocoa finish



Otsukas

4-1624 Kuhio Highway
Kapaa • 822-7766

Mon-Sat 9-5:30 • Sun Closed

WWW.OTSUKAS.COM

He was there Arthur R. Budd, WWII U.S. Navy Pilot

By Anne E. O'Malley

It sounds like a thriller—shot down, lost at sea, a miraculous rescue. But it's real life, the life of Kapa'a resident Arthur Richard Budd, 90.

The son of a struggling Utah produce distributor, Budd grew up to become a U.S. Navy pilot in WWII in the Pacific Theatre. He then went on to marry, have five children, build a successful 50-year career as a dentist, and own his own Mooney airplane.

He reflects during



Arthur Budd earned his US Navy pilot's wings in 1942 and served three years, in WWII. Here, he is in his early 20s. Photo courtesy Budd Family

this yearlong 100th Anniversary of U.S. Naval Aviation on how, in his early 20s, he found himself part of a five-pilot air group aboard the heavy cruiser USS New Orleans. The air group's job was to fly solo on an SOC float-plane throughout the Pacific, drawing flak. SOC stands for Scout Observation by Curtis

It was all in a day's work, he says, to "Just fly, rescue and do spotting for gunfire on the islands we were taking.

"I wanted them [Japanese] to spot me,



Arthur Richard Budd at his home in Kapa'a. Photo by Anne E. O'Malley

because we were trying to find out where the guns were on the islands so we could get our big navy guns on them. We had to knock out their defenses so our guys could land."

It was dangerous, but Budd says he never worried.

"I did get shot down on Guam and they hit

my oil line and the oil smeared the windshield," he says. "I couldn't see ahead—I had to stick my head out of the cockpit and fly the airplane.

"I made a landing in the ocean, and amazingly, my ship came all the way and picked me up. It was dangerous

see Budd page 12



Mayor's Rockin' in the Fifties Birthday Celebration

Saturday, October 8, 2011 5pm to 8pm

Kilohana Luau Hale

Suggested Donation: \$15 per person

Free for kupuna 65+ and keiki under 12

Spread the word to your
family and friends!

Oldies Music & Dancing!

Paid for by Friends of Bernard Carvalho for Mayor
PO Box 3513, Lihue, HI 96766

Contact us at 246-8737 for tickets &
Tickets will also be available at the door

Keala

from page 4

different from what you get in ABC Stores,” Kai says. “We’ve made Hawai’i so disconnected from what the culture is that it’s some sort of fantasy now. The sad thing is, they don’t realize the real thing when they see it.”

An example is a new drawing of a stone adze. “They used stone and shells and built

that canoe and traveled all this way,” he says, marveling at the feats of his ancestors.

“When I was doing this drawing, I got the message, it’s time to go back to the canoe,” he says, referring to the construction of Nama-hoe, which is nearing completion.

“The canoe keeps people honest, and it keeps those sharing values alive,” he says in trying to explain the

deep impact voyaging has had on his life. “You’re at the mercy of the sea, and the only thing holding you up is the canoe. All you have are just your basic necessities, so when you give somebody something, it’s big, because it’s all you have. The canoe brings you home.”

For more information visit www.theoriginalkealakai.com.

Read more at forkauaionline.com

Visit forkauaionline.com in September to read about...

Family Visitation Center—a safe place for noncustodial parents to visit with their children

Jo Ann Lordahl’s new book on Princess Ruth

Aloha Shirts turn 75

Share the Care—How some communities are pitching in to help those in need



Sept 4th, Sunday

Investiture at Smith’s Garden, 10am - Noon,
Please call 821-6895 for more information.

Sept 11th, Sunday

Hale Pule at Kapa’a 1st Hawaiian Church, 10 am, Lyah Drake • 346-6924

Sept 12th, Monday

Hawaii Alive Review, Kaua’i Marriott (show only), 7:30pm - 9pm,
Dinner & Show Reservations 245-5050 Wallis Punua 651-6202

Sept 14th, Wednesday

Smith’s Luau, For reservations, please call 821-6895

Sept 23rd, Friday

Mokihana Festivals, For more information please call Maka Herrod, 822-2166

Oct 28th, Friday

Grand Hyatt Kaua’i Resort & Spa Hawaiiiana Events
Please call Stella Burgess at 240-6369 for more information.

Business Class Phone is now HERE!

- Unlimited Lines
- Call Hunting
- Voice Mail
- Unlimited Long Distance US and Canada



OCEANIC
TIME WARNER CABLE
Business Class

You first. The technology follows.™

Switch to Oceanic Time Warner Cable Business Class Phone and get extraordinary service and reliability from one provider dedicated to your business. Count on us for local support, the convenience of one bill and one flat rate. Add our High-speed Internet or Video services for a complete business communications solution that will save your business money.

1-866-556-7776 or businessclass.oceanic.com

Mokihana Festival September 18-24

This seven-day festival from September 18 through 24 sparkles with hula, Hawaiian and contemporary music, Hawaiian language, crafts, lectures, history and more, all in the name of a good cause. For information on events, visit online at kauaifestivals.com/festivals/kauai_mokihana_festival_2011.html



Men of Halau Hula O Hal'i'ileo, under the direction of Kumu Hula Doric Yaris, perform hula kahiko, or ancient hula, in the 2010 Kaua'i Mokihana Festival. Photo by Anne E. O'Malley

for KAUAI

coming direct to you

For your free subscription call Barbara 338-0111 or email barbara@forkauaionline.com

Available at all the following locations for your convenience:

WEST

Aloha-N-Paradise
Big Save, Eleele
Big Save, Waimea
Hanapepe Neighborhood Center
Hanapepe Public Library
Kalaheo Neighborhood Center
Kaua'i Coffee Visitors Center
Kaumakani Neighborhood Center
Kekaha Neighborhood Center
Kujos Market, Kalaheo
Menehune Food Mart, Kekaha
Waimea Neighborhood Center
Waimea Plantation Cottages
Waimea Public Library
West Kaua'i Veterans' Hospital
West Kaua'i Tech Visitor Center

NORTH

Big Save, Hanalei
Ching Young Village
Foodland, Princeville
Island Hardware, Princeville Center
Menehune Food Mart, Kilauea
Princeville Public Library

EAST

Big Save, Kapaa
Bobby V's Restaurant
Courtyard by Marriott Kauai
Dr. Lundgren, DMD
Foodland Waipouli
K-Mart Kukui Grove
Kapaa Neighborhood Center
Kapaa Public Library
KCC, Library
KCC, Dining Cafeteria
Kaua'i Beach Resort
Kaua'i Chiropractic Center
Kaua'i Chamber of Commerce
Kaua'i County Center
Kaua'i Visitors' Bureau
King Augo Center
Lihue Neighborhood Center
Lihue Public Library
Longs Drugs, Kapaa
Longs Drugs, Lihue
Mahelona Hospital
Menehune Food Mart, Kapahi
Oceanic Time Warner
Pono Market, Kapaa
PS&D, Kapaa
Regency of Puakea
Safeway
Times Supermarket
Tip Top Cafe
Walmart
Wilcox Hospital

SOUTH

Big Save, Koloa
Koloa Neighborhood Center
Koloa Public Library
Kukui'ula Marketplace
Living Foods Market & Cafe
Menehune Food Mart, Lawai
Poipu Shopping Village

Lihue Airport & Honolulu Inter-Island Terminal

NEW OWNERSHIP

Come and check out our showroom with brand new displays!



PACIFIC TILE
CREATING LIFE & SPACE

- New containers have arrived!
- Ask about Smart Tile Spacers



ILVA Pietra Travertine Bianco



PJ Ferrara & Fran Basuel

Open from 9:00 a.m. to 4:30 p.m. Monday - Friday

Lihue Industrial Park II • 2995 Aukele Street • 245-1765 • pacific-tile.com



KIUC is an equal opportunity provider and employer.

KIUC Membership Meeting

Kauai War Memorial Convention Hall

Sunday, September 25, 2011

4 to 6 p.m.

Come share chili & rice with the Board and Leadership of KIUC. Learn what's happening at your co-op. Sunshine Express will perform prior to the business meeting, which begins at 4:30 p.m. All members will receive an annual report and reusable shopping bag. The first 300 members will receive a bag of rice.

Co-op Connections cards will also be available.



Kaua'i Island Utility Cooperative
Your Touchstone Energy® Cooperative

Budd

from page 9

for the ship, and they probably shouldn't have done it, but they did and I'm still here."

On another occasion, Budd says he found himself lost at sea.

"All we had to go by was dead reckoning—you'd go by the direction of the waves and decide which way the wind was blowing. I was almost out of gas, so I flew until I saw the wakes of ships and didn't know if they were part of the Japanese fleet or ours, but that was my only hope.

"I followed the wake and found it was one of ours, the U.S.S. Portland, another heavy cruiser, and they picked me up.

"It was a miracle. They had the same equipment."

Then, toward the end of the war, the Japanese ordered kamikaze missions, suicide attacks by airplanes loaded with explosives.

Such a plane barely missed his ship, he says.

"I saw it hit the carrier. If it hit near the magazine, it would just blow the hell out of that—I can't remember if I saw the ship sink."



An historic photo of a plane launching from the USS New Orleans during Arthur Budd's period of service. Photo courtesy of Arthur Budd

Budd says he put the outcome in the hands of fate.

"A lot of our ships were sunk, probably about half of our fleet was sunk in Pearl Harbor before the action took place. My sister's fiancé was on the USS Arizona, sunk in Pearl Harbor and now the Arizona Memorial. He's still in that ship."

The names of the islands and their chains were exotic to the Salt

Lake City lad who'd never traveled far from home and was suddenly on the other side of the globe.

"The Tarawa chain was the first battle, and Makin Island, the Gilbert and Marshall Islands," says Budd, who

adds that there were nine more battles.

At times, the ship's crew and pilots pulled into an island port for a break, diving off the ship, swimming, and stocking up on food and fuel.

But in the end, war in general, says Budd is "ridiculous because it doesn't gain anybody anything. It's dangerous."

He ought to know. He was there.

PS&D TIRES

BRIDGESTONE

Your Journey, Our Passion



BUY FOUR. GET MORE.

Offer Valid September 1 through October 1, 2011

Get Up To \$100 Value Back!



on an American Express® Reward Card** by mail when you purchase a set of four eligible† Bridgestone Dueler™ tires.

ELIGIBLE TIRES:

\$100

Dueler™ A/T REVO 2
Dueler™ H/L Alenza™
Dueler™ H/P Sport™

\$50

Dueler™ A/T 695
Dueler™ A/T RH-S
Dueler™ APT IV
Dueler™ H/L 422 Ecopia

\$25

Dueler™ H/T

PS&D TIRES

4004 Rice Street,
Lihue, Kauai, HI

(808) 245-9502 • www.psdtires.com



If there is anything you don't like about these Bridgestone tires, you can return them for a full refund or exchange!*

*Certain restrictions and limitations apply. See your authorized retailer for complete details.

**Offer good in the U.S. only. Mail-in claim form required. Card can be used where American Express® Cards are welcome in the U.S. (not for online purchases); not redeemable for cash. Card issued in the name submitted on the rebate form; cannot be issued to minors and is not transferable. Use of Card constitutes acknowledgment that it is given as a Reward Card and no consideration, value or money has been paid by the holder in exchange for this Card. Card valid for 6 months. Remaining balance subject to monthly fee of \$2.00 beginning in 7th month (except where prohibited by law). Terms and conditions apply; see americanexpress.com/reward for details. †For eligible tires, see your participating Bridgestone retailer. Eligible tires must be purchased from a participating Bridgestone retailer's inventory between September 1 and October 1, 2011. Certain restrictions and limitations apply. Offer excludes Costco purchases. See your participating Bridgestone retailer or bridgestonetire.com for complete details.

Women Empowering Women
Network

WEW was designed to bring like-minded women under one roof, for the purpose of growing their business through fun and effective networking events. Each month you will find a group of lively and welcoming women at our Meet & Mingles.

Our first event is:
Wednesday September 14th • 5:30-7:00pm • Aston Aloha Beach Hotel
Mark your calendars and bring your friends!
wewnetwork.com

KAUAI SENIOR CENTERS PRESENTS

CRAFTS FOOD MUSIC

9 SENIOR CENTERS!

Saturday, October 15th.
9:00 AM—1:00 PM
Kauai War Memorial
Convention Hall, Lihu'e

● ADMISSION FREE
● Entitles to One (1)
● Door Prize Ticket

● Additional Door
● Prize Tickets
● Available



KILAUEA
KAPAA
LIHUE
KOLOA
KALAHEO
HANAPEPE
KAUMAKANI
WAIMEA
KEKAHA



Sponsored by: County of Kauai
Department of Parks & Recreation / Na Kupuna
Council

IF ADA ASSISTANCE IS REQUIRED,
PLEASE CALL 241-4462

Jan TenBruggencate Native Edibles

When seven South Pacific canoes anchored in Hawaiian waters this summer, residents brought the hungry voyagers food: kalo, banana, sweet potato, green vegetables and much more.

Bounty of the land; none of it native to these islands.

We are so accustomed to doing our hunting and gathering at the supermarket or in our own gardens and farms that it's hard to imagine the issue that faced the first Polynesians whose canoe pushed onto Hawaiian sands.

They may have carried seeds and vegetative planting material, pigs and chickens, dogs and rats, but there were no crops to feed a hungry crew. No farms, no markets.

Could they survive? Of course. Hawai'i had plenty to provide.

The easiest food was protein. There were fish in the sea and easily-caught ground-nesting flightless birds on the land, seals and turtles on the beaches.

The late, great ethnobotanist Izzy Abbott pointed out that every native Hawaiian limu was edible.



'Ohelo (*Vaccinium reticulatum*) fruits at Haleakala National Park. Photo by Forest and Kim Starr

But the concept of plant-based land food is a problem—if only because we are so accustomed to eating very few species, and virtually all of them farmed—like sweet potato and kalo.

Veteran Pacific voyagers would have been expert at identifying resources in the wild, and while Hawaiian ecosystems were unique in the world, many of the species would have been familiar to folks from Pacific islands.

In the wild in Hawai'i, there are nuts: examples are the thin edible nuts inside hala fruit, the seeds in the 'iliahi.

There are many edible fruits: examples are the Hawaiian raspberry or 'akala, the Hawaiian cranberry or 'ohelo, the popolo, the

'ulei, lama and even the white berry of the beach naupaka—it's starchy and hasn't much taste, and is sometimes referred to as famine food.

Greens? The 'akulikuli, or purslane is a fleshy edible from near the shore. The leaves of the 'aweoweo or Hawaiian goosefoot are edible cooked.

In the mountains, the Peperomia 'ala'alawainui can be eaten. And so can the blossoms of pretty much all of the many Hawaiian relatives of hibiscus.

These are just a few.

If there is an argument for conservation of the native environment, how about its value as a source of food for the future? Many native edibles

see Edibles page 15

Powwow September 23-25

This year's Powwow will be held September 23 through 25 at Kapa'a Beach Park. For information, visit online at kauaifestivals.com/festivals/kauai_powwow.html and also at www.kauaipowwow.com



Rose Sampson, Head Woman Dancer for 2011 Kauai Powwow, dressed in traditional regalia of the Yakama Nation of Toppenish, WA. She has served as the Head Woman Dancer for the Kauai Powwow for 10 years. Photo by Dr. Ka-ni Blackwell

West Kaua'i Plantation Heritage



Dr. Travis Parker

Our Emergency Physicians & Nurses are here 24 hrs/day, 7 days/week to Help you with Fast, Friendly, Expert Service!



Dr. Eliot DeMello



Dr. Ryan Ngiam



Conveniently Located
KAPAA at 823-4194
Mahelona Medical Center
4800 Kawaihau Rd.



Dr. Wayne Fukino



Dr. David Gregorius

WAIMEA at 338-9444
West Kauai Medical Center
4643 Waimea Canyon Dr.



Dr. Joseph Burris

Facilities of Hawaii Health Systems Corporation

Eleele Shopping Center



Best Breakfast, Lunch & Sandwiches. We bake bread & pasteries.

7 days to serve you 6am-9pm

Call Take Out
335-6027

simply perfect
Plantation Weddings

Contact
 Waimea Plantation Cottages:
 Chanda at **338-1625**
events@waimeaplantation.com



WAIMEA PLANTATION
COTTAGES

WRANGLERS

STEAKHOUSE

Season Specials!

Appetizer:
 Local Grown Kauai
 Shrimp with Garlic
 Butter

Thirst Quenchers:
 Mango & Lilikoi
 Mojitos, Lychee
 Martini's \$8

338-1218
 9852 Kaumualii Hwy
 Fax 338-1266

The Historic
WAIMEA
THEATER

For Schedule Information www.waimeatheater.com
 Movie Prices: \$8 Adults, \$7 Students,
 Military, Seniors (55+), \$6 Children (5-10)

Read For Kaua'i Online at www.forkauaionline.com
 Go to E-Edition to see ads and editorial

Wheels and Deals



M. KAWAMURA FARM ENTERPRISES, INC.

Lihue
2824 Wehe Road
245-3524
FAX 245-5126
kawamurafarm.com



SPECIAL DEALS ON ALL FARM EQUIPMENT

Everything you would expect from the finest reel mower on the market. Tru-cut mowers maneuver easier, cut smoother, require less maintenance and last longer than the competition. Choose from a Honda or Briggs & Stratton powered mower.

TRU-CUT



King Auto Center

Lihue
4330 Kukui Grove St.
245-5977
kingautocenter.com

SATURDAY SERVICE SPECIAL • NOW \$19.95 OIL AND FILTER CHANGE AND MULTI-POINT INSPECTION

Up to 5 quarts of oil. Diesel engines excluded. Price plus tax and shop fees.

Includes complementary 120 day road side assistance and a carwash.

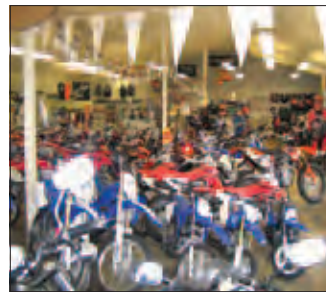
This is a Saturday only special. Free shuttle in the Lihue area. Please call for details and an appointment.

Offer expires: 09/30/2011



Garden Island Motorsports

Lihue
4018 Rice Street
822-7283
gardenislandmotorsports.com



Come and visit us at our new store in Lihue, located at 4018 Rice St. next door to the PS&D NAPA auto parts store. We are a full service dealership for Honda, Kawasaki, KTM, and Yamaha products. You can get O.E.M. and aftermarket parts and factory authorized service for the brands that we carry for on and off-road motorcycles, ATVs and Utility vehicles. Ask about our free pick up for service.



Kevin's Automotive Repair

Kapaa
954 Kipuni Way
822-7507
kevinsautorepairkauai.com



ALWAYS THE BEST SERVICE!

We Do: Air Conditioning, Brakes, Lubrication, General Repair and Safety Checks. We service BMW, Mercedes, Volvo, Volkswagen and Porsche. Voted the Best Auto Repair on Kaua'i. We take pride in our work and offer the best possible prices. Open Monday-Friday 8am to 4:30pm. Closed 12:30 to 1:30pm for lunch.

Edibles

from page 13

have never been actively managed for their food resources.

The 'ohelo is an example of one that recently has gotten some attention. There are

several varieties of this relative of cranberries and blueberries. Its fruits are often red, but sometimes yellow to orange in color when ripe.

Last year, in part to reduce the harvesting pressure on the wild

plants, a research effort to develop a domesticated 'ohelo was announced by the U.S. Department of Agriculture's Agricultural Research Service, Pacific Basin Agricultural Research Center. One tasty, hardy culti-

var of 'ohelo is called "Kilauea." It should be available in nurseries and perhaps seed outlets soon.

Jan TenBruggencate is an author and the former science writer for The Honolulu Advertiser. He operates a

communications company, Island Strategy LLC. He serves on the board of the Kaua'i Island Utility Cooperative and on the County Charter Review Commission.





Kauai Filipino Chamber of Commerce

PO BOX 3618 • LIHU'E, HI 96766 • TEL 808-651-9139

filipinochamber@aol.com

Please join us on our upcoming event...

Annual Scholarship Golf Tournament

Monday (Labor Day) • September 5th, 2011 • Wailua Golf Course
Luncheon Program to follow after the golf (11:30 AM) @ the Lydgate Pavilion

visit us on the web:
www.kauaifilipinochamber.org



GRAND Prize: \$500.00

Please visit our website for more information-www.kauaifilipinochamber.org
call (651-9139) or email filipinochamber@aol.com

for all your Printing needs!

- SBA Awards & Voted the Best Kauai People's Choice Award
- Full Color & Offset Printing
- Banners & Blueprints
- Graphic Design Services
- Personalized & friendly service
- Family owned & operated
- Serving Kauai for over 21 years

808 246.0147 PH
246.0283 FAX
print@inkspotkauai.com
twitter.com/inkspotcorp
facebook.com/inkspotprinting

We Design!

Need to send money TO THE PHILIPPINES?

Money Transfer Service

We offer remittances to the Philippines with our YesExpress money transfer service.

Just and secure • Low transaction fee
Convenient (available at any branch)

Learn more. Visit any branch, fb.com
or call 888-844-4444

Certain restrictions apply. YesExpress is a registered service mark of First Hawaiian Bank.

PARADISE TAX & ACCOUNTING SERVICES, LLC

"Delivering distinctive customer satisfaction through affordable hallmark services!"

25 Years Accounting Experience
CPA Exam passed
Tax Preparation, Accounting, Bookkeeping and Payroll
Kamaaina friendly staff,
Ilocano and Tagalog Fluent
Experience the difference!

CRISTETA OWAN
Enrolled Agent
Licensed to Practice Before the IRS

(808) 245-7780 Park Plaza One
4374 Kukui Grove St. Suite 202 • Lihue, HI 96766

Kauai Chiropractic and Wellness Center

Dr. Kaipo Pavao DC, Chiropractor
3092 Akahi St., Lihue, HI 96766
(808) 246-8858 • (808) 246-8805 Fax
kauaichiropractic@earthlink.net

KAUAI CARE CENTER
A Regency Pacific Community

A 5-star 53 bed Long Term Care Facility located in the heart of Waimea!

338-1681

Liza Cabal
Trinidad RN
Administrator

Famous ROBEL'S, LLC

Variety Store & Fast Foods
A Variety Store...with SO MUCH MORE!

Breakfast, Lunch & Dinner
Mon-Thurs 7am to 8pm
Fri-Sat 7am to 11pm
(serving oxtail soup & saimin til closing)
Sun 7am to 5pm

ASK & GET \$1 OFF HALO-HALO

Wailua Shopping Plaza • Next to Brick Oven

(808) 822-0632
4-361 Kūhio Hwy. #101 • Kapa'a



Come to Kukui'ula Village for Kaua'i's Best Shopping and Dining Experience!

Visit The Shops at Kukui'ula on the sunny south shore in Po'ipu, home to the finest shopping, dining and galleries on Kaua'i. Enjoy outstanding farm to table creations at our award-winning restaurants and cafes, shop the island's newest retailers and browse some of Kaua'i's finest artists at our unique galleries and boutiques. Influenced by the island's rich heritage, The Shops at Kukui'ula offers a lush garden setting with an ocean view for your shopping and dining enjoyment.

Join us every Wednesday afternoon from 4 pm to 6 pm for the acclaimed Kaua'i Culinary Market, a gourmet farmer's market brought to you in partnership with the Kaua'i County Farm Bureau. Enjoy live Hawaiian music, a wine and beer garden and visit with over 20 of Kaua'i's finest produce growers, florists and culinary artists. Don't miss the live chef demonstration at 5 pm featuring some of the island's most talented chefs, and stay to sample their delicious creations.

The Shops at Kukui'ula™

2829 Ala Kalinkaumaka - at the Roundabout in Sunny Po'ipu
808-742-9545 - www.kukuiulavillage.com - Open Everyday 10 am-9 pm



~ fine jewelry and lifestyle boutique ~

palm palm

www.palmpalmkauai.com
808-742-1131

QUIKSILVER

ROXY

KUKUI'ULA VILLAGE, POIPU
OPEN DAILY 10 A.M. - 9 P.M.
808.742.8088

bring in this coupon
to receive 20% off one (1) regular-priced item.

GOURMET HOT DOGS
Dude Dogs

**Lunch Special • Regular Hot Dog
Chips • Medium Drink \$4.99**

Located at the new Kukui'ula Village in Poipu
- across from the roundabout -
808-742-9438
One coupon per person

RED KOI

redkoihawaii.com a collection

showcasing original art, fine
craft and exotic woods from
Kauai and other creative places

Village Food and Restaurants

Local Style Food

- Bubba Burgers
- Dude Dog
- Lapperts Ice Cream & Coffee
- Uncle's Shave Ice & Smoothies

Village Dining

- Josselin Tapas Bar & Grill
- Merriman's Kauai
- Merriman's Downstairs Cafe
- Tortilla Republic Grill & Margarita Bar

Lappert's Hawaii

ICE CREAM & COFFEE

SAVOR ALOHA BLISS
WWW.LAPPERTSHAWAII.COM

VISIT OUR SHOPS!

- HANAPEPE
- KUKUI'ULA VILLAGE - POIPU
- COCONUT MARKETPLACE
- PRINCEVILLE CENTER

Class

from page 5

Waimea for all that the class had received, he thought it was a great idea.

“I said I certainly would serve on the committee,” says Akita.

The core group that had planned some of the class reunions on Kaua'i met and agreed Wellington was on to something.

“Our whole committee felt we could do it,” says Akita. “The feeling was that we came from immigrant families and saw how hard our parents worked, and we wanted to give something of value to where we grew up, for the great memories we had, the great teachers we had.”

The group consulted with Hawai'i Community Foundation via the Kaua'i office and learned that to start a fund, they'd need \$25,000. At a 2010 reunion in Las Vegas, 40 out of the class of about 185 met—and unanimously voted to establish the Waimea class of 1952 Scholarship Fund.

Less than a year later, this July, the “Classy '52”—Wellington gave them the nickname—saw the first scholarship, in the amount of \$1,000, awarded to graduating Waimea High School Senior Tanner Fernandez.

“We're hoping to grow the fund as long as we can and open it up to our families and others in the community who are aware of the fund and would like to help,” says Akita.

The Classy '52 raised the funds and set the criteria, but the Foundation does all the administration, from forming a volunteer selection committee to soliciting applicants from Waimea High School.

Wellington made a certificate of award for the scholarship that depicts Waimea High School with shower trees and the names of all the classmates, not just those who contributed.

“Whoever receives the award will know these are the people who thought of them and wanted to give somebody the kind of education that they received from their hard-working parents,” says Akita.

“After we got started, we were thinking we might have started something that might inspire other alumnae to do something like this. We started thinking beyond ourselves and really, nationally, with education so important in making a better society, we thought we would make it something truly meaningful and worthwhile.”



RoadRunner®
Hawaii's Fastest Internet Service

Weekly Programming on Ho'ike Kauai Community Television (Channel 52)

Monday		9:00 pm	Words of Peace by Prem Rawat	7:00 pm	Unko Funki Clubhouse
6:00 am	Open Mic / Community Camera	9:30 pm	Key of David	8:30 pm	Voices of Truth
7:30 am	Music and the Spoken Word	11:00 pm	Eckankar	9:00 pm	The Truth Will Set You Free
8:00 am	Word of Peace by Prem Rawat			Friday	
12:00 pm	Open Mic / Community Camera	Wednesday		6:00 am	Open Mic / Community Camera
6:00 pm	Open Mic	6:00 am	Community Camera / Open Mic	7:30 am	The Truth Will Set You Free
7:00 pm	Coconut Festival Cooking Demonstrations	8:00 am	Calvary Chapel of Kauai	8:30 am	Voices of Truth
8:00 pm	Church at Koloa	9:00 am	Key of David	12:00 pm	Open Mic / Community Camera
9:00 pm	A Meeting with Gangaji	12:00 pm	Open Mic	5:30 pm	Astrology with Rollin Frost
11:00 pm	Employees Today	4:30 pm	Ohana Christian Fellowship	7:00 pm	A Meeting with Gangaji
		5:30 pm	Emergence	8:00 pm	New Beginnings Christian Church
		7:30 pm	Waimea United Church of Christ	Saturday (and/or) Sunday	
Tuesday		10:00 pm	Astrology with Rollin Frost	At will	Open Mic / Community Camera
6:00 am	Community Camera	Thursday		8:30 am	Astrology with Rollin Frost
7:30 am	Music and the Spoken Word	6:00 am	Ohana Christian Fellowship	9:00 am	Alonzo's Sports (Saturday)
8:00 am	Church at Koloa	7:00 am	New Beginnings Christian Church	4:00 pm	Alonzo's Sports (Sunday)
9:00 am	Employees Today	9:00 am	Waimea United Church of Christ	6:00 pm	Emergence
12:00 pm	Open Mic	12:00 pm	Open Mic	7:00 pm	Unko Funki Clubhouse (Saturday)
3:00 pm	Community Camera	5:30 pm	Astrology with Rollin Frost		
6:00 pm	Open Mic				
8:00 pm	Calvary Chapel of Kauai				



**Oceanic
Time Warner
Cable®**

3022 Peleke St., Suite 8, Lihue, HI 96766 (808) 245-7720 or 245-8951

Check Ho'ike website for our monthly Basic Video Production classes and call 246-1556 for information and registration. 4211 Rice Street #103, Lihue, Hawaii 96766 • ph: (808) 246-1556 • fax: (808) 246-3832 • www.hoike.org

Program schedule may be changed if tape(s) are not submitted on time.

For more details on additional programs being cable cast on Ho'ike go to our web site at www.hoike.org

Island Activities

Here kitty, here puppy!



Noah Parks of Albuquerque, NM is one of dozens of Kaua'i visitors who drop into the Kaua'i Humane Society regularly for an animal fix while on vacation. The Parks family came multiple times during their two-week stay here. The Society invites you to an abbreviated volunteer orientation at 1p.m. on Tuesdays or Thursdays. Photo courtesy of Pam Woolway

Oh, hallelujah! if you left Fido, Spot, Red Rover or Meow Kitty at home when you came to paradise, or if you live here and are in need of an animal fix, visit the Kaua'i Humane Society for a petting session. And if you're feeling heroic, you might even like to sign on to clean kennels.

"Every week, we have a couple of families come in to pet see Here kitty page 21

special
Hamaaina
Packages
available

- room
- meals
- spa experience
- and adventure

WAIMEA PLANTATION
COTTAGES

please Call us at 338-1625
services@waimeaplantation.com

CHEAP TOURS

HAWAII

HAWAII'S PREMIER WHOLESALER
OF TOURS & ACTIVITIES

Did You Know...

When you call **CHEAP TOURS** you are guaranteed a savings of \$100 per person on the regular rate of a helicopter tour of Kauai.

FOR A LIMITED TIME ONLY

CHEAP TOURS has made it possible for everyone to afford Kauai's number one activity, a Deluxe Helicopter Tour, by giving our entire commission back to the customer!

KAUAI FULL CIRCLE

50 - 60 min. Deluxe Air Tour

SPECIAL

\$134.00
per person

- Live Pilot Narration
 - 2-Way Communication
 - Ceiling to Floor Windows
 - Climate Controlled Cabin
 - Bose X Pro-Series Headphones
 - Doors on for Safety & Comfort
- Plus Airport Surcharge



Prices subject to change • Fuel surcharge not included • Weather permitting

Don't Delay - Call **CHEAP TOURS** Today,
Where Saving Money is Smart!

Exceptional savings also on:

ATV • HORSEBACK RIDING • BOATING • SAILING
KAYAKING • MOUNTAIN TUBING • ZIPLINING

808-246-0009

Toll Free:
888-822-5935

WWW.CHEAPTOURSHAWAII.COM

Come aboard for an experience of a lifetime!

Explore the
NA PALI COAST
aboard
**CATAMARAN
KAHANU**

A Fun
Exciting
Spectacular
Adventure!

- Snorkeling
- Sea Caves
- Spectacular Views
- Deli Lunch
- Whale Watching
- Dolphins & Turtles
- A True Hawaiian Cultural Experience



808-645-6176

Toll Free 1-888-213-7711

www.catamarankahanu.com

P.O. Box 51006 • Ele'ele HI 96705
all major credit cards accepted



We bring the best of Tahiti to Hanalei

Robin Savage knows Tahitian pearls and where the best of them come from. Chances are, she has been in the very lagoon where your pearl was created. Her designers have taken the world's finest pearls and created exquisite custom designs that will remind you of island breezes for years to come. It's just possible you could take home something more precious and enduring than memories.

In the tube, an exclusive design

Ching Young Village, Hanalei,
Office: 808-826-0317,
Showroom: 808-826-9397
www.savagepearls.com



It's not just a pearl, It's a Savage Pearl.

Kaua'i Dining

Local & Farm to Table

22° North formerly Gaylord's Restaurant, 245-9593 Kaua'i meats and produce. Locavore eating. Serving lunch and dinner. Sunday brunch buffet Located in Kilohana Plantation, Lihue. www.22north.net

Bar & Grill

Port Allen Sunset Bar & Grill Port Allen Marina Center, 4353 Waialo Rd. Eleele, 335-3188 Great casual atmosphere and ono pupus! In addition

to full menu and bar offerings, Port Allen offers a daily happy hour from 3-6 p.m.

Richies' Bar & Grill 2978 Umi St., Lihue, 246-6300 Serving breakfast. Lunch. and dinner seven days a week. Local menu includes specials, Saimin and orders to go. Private room and lounge available.

Rob's Good Times Grill 246-0311 4303 Rice St., Rice Shopping Center Lihue. Largest Sports Bar on the

island. Lunch & Dinner with seafood specialties. Drink & menu specials daily. www.robsgoodtimegrill.com

Outdoor Picnic

Koloa Mill Diner Koloa Rd. & Hwy 520 Local lunch and supper specials at the food van. Eat under the old banyan tree at the historical sugar mill site across from Old Koloa Town Shopping Center. Owner Chris Murray, 351-6565

Hotel Dining

Kaua'i Beach Resort 4331 Kaua'i Beach Dr., Lihue. 245-1955. 4 restaurants, 4 pools. Tropical oceanfront on 25 acres. Accommodations near Lihue airport. Banquet rooms and lounge for all occasions. www.Kaua'i beach 'resorthawaii.com

Grand Hyatt Kaua'i Resort and Spa at Poipu Beach 1571 Poipu Rd., Koloa 742-1234. A Hawaiian Classic hotel with spa and Beachfront with ultimate in guest services and amenities. Traditional Luau. www.grandhyatt-Kauai.com

Local Style

The Grove Café at Waimea Plantation Cottages. 338-9733 on 9400 Kaumualii Hwy., Waimea. Local style entertainment Wed., Thurs. Fri. Sat. Locally made brew and full menu for

lunch & dinner. Excellent choice for families. www.grovecafeKaua'i.com

Bakery/Café/Deli

Living Foods Market & Cafe Kukui'ula Village, Poipu 742-2323 3839 Ala Kalanikaumaka. Organic produce, wines and specialty items. Local farmers supply product & meats. Café serves from 8am to 8pm www.

livingfoods.com

Chinese

East Chinese Village Cuisine 822-0168, 4-722 Kuhio Hwy., Kapaa. Full menu 7 days a week. Open 11am to 10:30pm. Authentic Chinese specializing in Southern China cooking with family service and luncheon specials.

Here kitty

from page 19

animals," says Pam Woolway, volunteer coordinator for the Society. "It's so cool—I love it that people take time out of their vacation to come."

One family of four from New Mexico came in on four days out of their vacation, then emailed her to thank the Society again. She's also received letters from other visitors who treasure their time

with the Society's pet family.

Woolway advises that you can only take little dogs outside and that if you wear flip flops, sorry, but you can only pet cats.

"Wear close-toed shoes and you can take dogs," she says.

Looking for more than just petting? Want more information? Call Woolway at 808-632-0610 ext. 102.



Restaurant 2978

2978 Umi Street, Lihue (Formerly Lihue Café)

Open Daily: Breakfast & Lunch, 7am-2pm

+

Come check our
NEW SUSHI BAR

Featuring Sushi Master Yoshi making your
FRESH Sushi Platters 5:30pm to 9pm

OPEN FOR DINNER 246-6300

Monday - Saturday 5:30pm to 9pm

Journey of Cups: Release Tension

by Marko Kowalski

It's all about attitude. Is your cup half full or half empty? Do you get frustrated and overwhelmed at times? Do you get stressed out, fatigued and tired during the day?

Here's a practice I do daily. I call it the "journey of cups," and you can do it standing or while seated. First, empty your cup. To empty the cup, we shake, rattle and roll to release tension and blockages. Shake your shoulders, arms and hips. Kick out your legs. These are gestures that release stagnation.

To fill the cup, do balancing and strengthening movements.

Stirring the cup is more internal, meaning you scan and reflect on how your mind, body and heart is in-

FIT

tegrated and aligned. You feel balance, centered, grounded and whole.

When you become the cup, you open to life and all that it has to offer; you live by your intuition, you trust the

process and find ways to be of service to others. You become the cup—you are in a state of present moment reality, aware of both internal and external environment.

In TRI-Hara holistic practice, half of what we do is physical and half is mental, internal and external. We develop a positive attitude, open heart, strength and flexibility of mind and body. We

are connected to the infinite universe and all the elements.

I enjoy this quote from taragold Daily wisdom: "How much more joy we feel when we seek not to make something of ourselves but to make someone of ourselves."

Marko Kowalski is the originator of TRI-Hara Holistic Fitness, a practice that combines yoga, non-aggressive martial arts, breath work and meditation. He produces and hosts his own program on Ho'ike Channel 52 every day at 7 a.m., 1 p.m. and 7 p.m. He teaches



Marko Kowalski, owner, Tri-Hara Holistic Health and Well-being, performs Touching the Sky. Photo by Anne E. O'Malley

at Kaua'i Beach Resort in Lihu'e on Tuesdays at 3:30 p.m. and Wednesdays/Fridays at 8:30 a.m. Meet in the lobby, bring a towel, fee is \$10. For information on these and other sessions, or to arrange a personal training session, call 212-6228 or visit online at trihara.com

Low Mortgage Loan Rates!

KCFCU Has the Mortgage Loan You Need

We offer a variety of home loan options with NO prepayment penalties, low fees and low closing costs. 30 Year Mortgages and land loans also available.

	Rate	Points	APR	Payment
15 Year Fixed Rate	3.500%	2.000	3.833%	\$714.89
15 Year Fixed Rate	4.000%	0.000	4.042%	\$739.69

For more information, call us today at 245-6791!

*APR = Annual Percentage Rate. All interest rates are based on a 30 day commitment for owner-occupant 1st mortgage loans with a 20% down payment. APR's are based on loan amounts of \$100,000. Payment amounts are based on a loan amount for \$100,000. Your actual rate and points may vary. Interest rate information is subject to change without notice. We do business in accordance with the Federal Fair Housing Law and the Equal Credit Opportunity Act.



www.kcfcu.org 808.245.6791

This credit union is federally insured by the National Credit Union Administration.

Our Island.
Our Community.
Our Commitment.





THE SOUND OF THE **FM97 SUPER SALE CASH REGISTER** IS YOUR SIGNAL TO CALL AND WIN THOUSANDS OF DOLLARS IN PRIZES ALL SUMMER LONG! INCLUDING: LAS VEGAS VACATIONS, TV'S, BARBEQUES WEEKEND GETAWAYS, CAMERAS, GROCERIES AND MORE! LISTEN TO **FM97** AT **96.9** FOR COMPLETE DETAILS!

Grand Prize: A Deluxe Las Vegas Vacation for Two!

Courtesy of *Vacations Hawaii*
HAWAII LAS VEGAS



Jason Fujinaka

Greg Moseley

BB Choi

FM97'S SUPER SALE PRIZE SPONSORS:

- Don's Camera & Fine Jewelry • Ching Young Village Shopping Center
- Courtyard by Marriott at Coconut Beach • Kauai Coffee Visitor Center
- Jailhouse Pub & Grill • Gold Express • M. Kawamura Farm Enterprises
- Lihue Fishing Supply • Kiahuna Golf Club • Garden Island Motor Sports
- Pacos Tacos • Kauai Community Federal Credit Union • Robert's Jewelry
- Kukui'ula Market • Napa Auto Parts Stores • Garden Island Federal Credit
- Pro-Am Golf Shop • Kauai Music & Sound • Kauai Chocolate Company
- The Wine Shop • Ishihara Market • Flowers Forever • The Hardware Guys
- Ko'a Kea Hotel & Resort • Sueoka's • Robert's • Sears • Otsuka's Furniture

Kauai's
FM97
96.9KFMN

Kauai's 1st Radio Choice.

Sponsor a Horse for Kauai Humane Society



Nurtured, groomed and fed, the 16 horses seized as part of an animal neglect/starvation case in May 2010 thrive under the care of Kauai Humane Society staff. The shelter continues to provide veterinary care, feed and labor for the horses they've had in protective custody for 15 months.

Pictured here is Tinkerbell, who her handlers affectionately refer to as "Tankerbelle," for her clear affection for alfalfa

cubes. Kane, the stallion living on the property, provides regular entertainment attempting to woo the mares in the far pasture and Shetland pony juvenile, Luna, has grown from a shy yearling into a frolicking adolescent.

Generous donations provided by the community have dwindled, so the shelter seeks additional funds for the continued care of the horses. Over the past year feed alone has cost \$11,423, only surpassed in cost by labor hovering at nearly \$20,000.

To sponsor a horse while the case is pending trial, call 632-0610, ext. 108 or send checks payable to Kauai Humane Society, PO Box 3330, Lihue, HI 96766. Donations will only be used for feed, hoof care, veterinary care and labor.

Matchmaking: It's what we do



Looking for unconditional love? Let us introduce you. Visit kauaihumane.org or come meet your new companion at 3-825 Kaumuali'i Hwy or call 632-0610, ext. 100



Joy Kagawa • Profile

As told to
Anne E. O'Malley

WHO: Joy Kagawa

WHAT: I'm a sales representative at King Auto Center. I love matching people with cars. Come and see me.

WHY I DO IT: It's entertaining and I meet a lot of people from different walks of life. I ask a lot of questions, trying to hone in on what they're

looking for.

MY FAVORITE PLACE TO DO IT: Outside, by the cars—they might see something that fits their needs.

HOME: Puhi. I was born in KVMH in Waimea, grew up in Kekaha, went to Kekaha Elementary School and Waimea High School, then on to KCC, so Kaua'i all the way!

MY WORKING LIFE:

My first job was working summers at Kaua'i fruit packers in Kapa'a, trimming pineapples. My first full time job was working for a shoe repair shop in Ala Moana Shopping Center. I lived on the mainland for about 10 years, in Nebraska and San Francisco. I began work here before it was called King Auto Center. It was in 1990, when it was an older dealership called Kaua'i Auto Center.

PHYSICAL DESCRIPTION: Aging gracefully

HOBBIES: Reading fiction

LAST BOOK READ: True Colors by Kristin Hannah

LAST LISTENED TO: 93.5 FM—KONG Radio

LAST WATCHED: Food Channel

LAST ACCOMPLISHMENT: Finishing the TriKauai Triathlon

QUOTE: "Smile. Be Someone's happy day."

STILL TO COME: Getting over this recession and being able to look forward to everyone be-



Joy Kagawa matches people with cars. Photo by Anne E. O'Malley

ing more comfortable and being able to meet their needs.

SEEKING: Day by day to be happy, help people.

see Profile page 25

GARDEN PONDS NURSERY
1100 Ceramic Pots Have Arrived!

OPEN Wed-Sun 12 - 5 PM

located on Kuhio Hwy. in Kilauea Mauka of Banana Joe's & Kauai Mini Golf
828-6400
www.gardenpondskauai.com

Owner, Ken Bernard

bamboo works
KAPA'A • KAUI

"Everything Bamboo... And Beyond"

- Furniture
- Bamboo Clothing
- Building Materials
- Gifts & Accessories
- Home Decor
- Window Treatments

4-1388 Kuhio Hwy in Old Kapaa Town
Open Monday thru Sat. 10-6 Sun. 11-4
www.bambooworks.com 808-821-8688

Island School
Celebrates the enthusiasm of learning!

Call or email for more information
246-0233
info@ischool.org
www.ischool.org

**More People Read
For Kaua'i Monthly**
Read us on the web at www.forkauaionline.com - E-Edition

Profile

from page 24

HOW ARE YOU For

Kaua'i? I'm from Kaua'i.

Nothing's like Kaua'i.

What gives me a real good feeling is when I see the older people being part of the com-

munity. If I haven't seen them for a while, it's heartwarming to see them again. They're still here, still doing good, still healthy.

ETHNIC BACK-

GROUND: Japanese. My father was from Maui and my mother from Tacoma, Washington. My grandparents are from Japan.

FAVORITE FOOD: Pasta Alfredo with seafood, beef burritos from the Crack in Po'ipu and sushi from anywhere.

CONTACT: Joy Kagawa, 245-4788, joy@king-autocenter.com

The lady who loves Halloween Gloria Cataluna, Lifestyles Boutique

by Anne E. O'Malley

In her roughly 650 sq. ft. of Lihue storefront shopping at Lifestyles Consignment Boutique, Gloria Cataluna goes wild each year with special inventory—Halloween costumes. From August through the hallowed eve itself, she is jammed with cute, impish, sexy costumes



Gloria Cataluna, owner, Lifestyles Boutique. Photo by Anne E. O'Malley

that turn all who choose to do so into their alter egos.

It's just part of the 10,000 or so items she carries—"I've got a lot of little stuff," she says, making no apology for the array of things

at her consignment boutique that has everything from prom dresses for fashionistas to would-be pirates headed to a serious trick-or-treat engagement.

If you can't pour yourself into these cool costumes with Wonder Woman-like bustiers or micro-mini pirate skirts, you can at least don a wig, add a mask or find one of those "little stuffs" to give yourself a new look.

Each year there are new costumes, and in addition, for folks who might like to dress up as someone else or just get a good deal, there are plenty of gently worn garments that aren't costumes.

Cataluna orders see **Lifestyles page 29**

Do You Need Help Buying Nutritious Food?

It's a SNAP

Supplemental Nutrition Assistance Program



You may be eligible for the new Food Stamp Program!



CONTACT:

Kauai Independent Food Bank
Call today for a quick 5 minute pre-qualification screening, assistance in completing full applications, and SNAP re-certification.

3285 Wa'apa Rd. Lihue, HI 96766
located next to Nawiliwili Park
Call today 808-246-3809, press 3

The Kauai Independent Food Bank is an equal opportunity provider and employer.

**This ad is partially funded by the Food & Nutrition Services (FNS/USDA)



Kauai's only full-powered FM Community Radio Station

Serving Kaua'i since 1997
Listener-Supported & Volunteer Powered



- Hawaiian Music Programming
- Community Talk Shows
- Wide Variety of Music Programs and Personalities

P.O. Box 825, Hanalei, HI 96714 • Office 808-826-7774 • Request Line 808-826-7771 • Toll Free 866-275-1112 • Fax 808-826-7977
Email kkcr@kkcr.org

 **Kaua'i Island
Utility Cooperative**
Your Touchstone Energy® Cooperative 

Incandescent Bulb Exchange

Visit us from 6 p.m. to 8 p.m.
at the Kukui Grove Center, Center Stage
on the first Friday of Every Month.



September 2
November 4

October 7
December 2

Bring your old incandescent bulbs and
we'll replace them with energy-efficient CFLs!

KIUC is an equal opportunity provider and employer.

KUKUI GROVE
THE PLACE TO BE





Robert Cazimero at the Kaua'i Museum

Legendary Hawaiian singer Robert Cazimero and Nina Kealiwahamana (not pictured) will perform in a benefit concert on Thursday, September 15 at the Kaua'i Museum, raising funds for the Museum. Doors open at 6 p.m. Tix are \$100. The concert is a celebration of the 50th anniversary of the Kaua'i Museum and will feature a silent auction, heavy pupu and a no-host bar.

Robert Cazimero.
Photo courtesy of
Kaua'i Museum

BenZaken
Investment Group
Honesty | Commitment | Integrity
*It's not just how much we know,
it's how much we care*

Kelly Shota Franklin
LPL Financial Consultant
CFP®, ChFC, CRPS

Benjamin Benzaken
LPL Financial Consultant
CRPS

Helen M. Chang
LPL Registered Admin
Associate

Kukui Grove Executive Center
4370 Kukui Grove Street, #214, Lihue, HI 96766 • Kauai: 808-245-7200 / Honolulu: 808-380-8888
Securities and advisory services offered through LPL Financial, a Registered Investment Advisor, Member FINRA/SIPC.
The Best of the Best award is based on the Kauai People readers poll. The businesses with the most votes in each category wins.

When was the last time you went Bowling?

Lihue Bowling Center

Bring this coupon in for
1 free game
with a purchase of 1 game (9)

21 for

4303 Rice Street • Lihue, Hawaii 96766 808-245-5263
Offer good for open play times only and subject to availability of lanes.
Based on full price of a game (\$4.50 per game for adults/ \$3.50 Jr./Sr.)

Kauai Adult Day Health Center

Enriching the lives of Kauai's elders and challenged adults by providing quality care with the aloha spirit

- Daily Exercises
- Recreational & Intergenerational Activities
- Socialization & Entertainment
- Health Care Monitoring
- Respite Opportunity for Caregivers
- Professional Supervision

Located at the Lihue Christian Church Social Hall
Call or email for more information
246-6919 • csakahashi@ohanapacific.com
OFFERING A FREE ONE DAY TRIAL VISIT

Lawai Beach Resort

5017 Lawai Rd., Koloa HI 96756 (808) 240-5100 www.lawai-beach.org

University of Hawai'i / Kaua'i Community College
MAKING A DIFFERENCE!

Roxanne MacDougall is back, at Kaua'i Community College!

MacDougall and Associates is once again partnering with KCC to offer a series of workshops for managers, supervisors and individuals. It has never been more important that leaders and their organizations are energized, focused, resilient, flexible and empowered to orchestrate positive change. An 18-year Kaua'i resident, Roxanne will share her vast education and background in consulting, facilitation and coaching. The Sustainable Organization Series workshops will focus on the foundational philosophy, principles and practices essential to sustaining effectiveness, resilience, positive morale, productivity, customer service and employee retention. This series is for anyone interested in greater success and in clarifying and creating their visions for their organizations and their lives. These two-day workshops are starting in November. Welcome back Roxanne!

"The things I learned in Roxanne's workshops 15 years ago I still remember and practice today."

Let KCC make a DIFFERENCE FOR YOU!
Contact KCC/Office of Continuing Education and Training:
808 245-8318, or email: ocet@hawaii.edu

KAUAI COMMUNITY COLLEGE



Thank you, Kauai, for voting Kukui Grove Center the island's best shopping center.

Mahalo nui loa and e komo mai!



Kukui Grove Center, Kauai's largest and only regional mall, is home to your favorite shops and restaurants like Payless ShoeSource, Macy's, Radio Shack, Sears, Jeans Warehouse, Genki Sushi, La Bamba Mexican Restaurant, Quiznos and more! With live entertainment and a variety of fun events, **Kukui Grove Center is the Place To Be.**

On every first Friday of the month, join us in the food court for **Kauai Island Utility Cooperative's Lightbulb Exchange** event from 6 p.m. to 8 p.m.! Exchange your incandescent lightbulbs for free CFL's. Learn energy saving tips from KIUC while you enjoy a great night of Aloha Friday entertainment. For more information, visit www.KIUC.Coop or call 246-4300.

Jump start your Mondays at the freshest market in town! Come experience local farmers, Kauai treats and shave ice at the garden side of Kmart at 3 p.m. Find fresh veggies and sweet local fruits. (May we suggest the apple bananas and plump papayas?)

Be sure to join us for our weekly events - Toddler Thursdays, Teen Open Mic Night, Aloha Fridays and more! For more on upcoming events, music and more, follow us on Twitter and Facebook. And when you arrive, don't forget to check in at Kukui Grove on FourSquare.

Don't miss next month's Halloween festivities! · **Trick or Treating on the Mall** on October 31
Freaky Fridays on Oct. 7, 14, 21 and 28, 5-9pm & Saturdays 1-6pm *Presented by Aloha Dance Studio*



Aloha from Sunglass Hut Kukui Grove

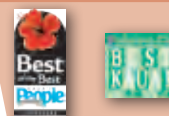
- FREE lifetime cleaning & adjustments
- FREE Broken/Damaged Replacement Guarantee
- 90 Day return or exchange policy
- 2 locations-Across from Kay Jewelers & inside Macys.

Come in today and try them on!
 Gary
 Store Manager
 246-6302



SHOP
 DINE
 PLAY
 AT

 KUKUI
 GROVE



OPEN DAILY
 Mon-Thur 9:30am-7pm
 Fri 9:30am-9pm
 Sat 9:30am-7pm • Sun 10am-6pm

Call In & Volume Orders Accepted **245-7115**

Kukui Grove Shopping Center



Need to send money TO THE PHILIPPINES?

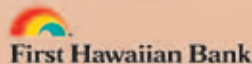


Money Transfer Service

We offer remittances to the Philippines with our YesExpress money transfer service.

Fast and secure • Low transaction fee
 Convenient (available at any branch)

Learn more. Visit any branch, fb.com
 or call 888-844-4444



Certain restrictions apply. YesExpress is a registered service mark of First Hawaiian Bank.

HAWAII STREAM Media Network

Log on and Watch Kauai
 24 Hours / 7 Days a week
 Always playing community events and more

Need your next event covered by the video pro's call us!

Also providing video hosting, news feeds, custom video channels and commercial production.

Contact Us: 808-346-8880

www.hawaiistream.com



Our New "To Go" Salads



Asian Sesame

Balsamic House

Italian Zest

632-0055

Kukui Grove Center Food Court

Bikini

from page 8

The Rodighieros visited the Bikini Room in Hanalei. As she looked through the bikinis in the shop, the owner asked Rodighiero what she did on Kaua'i. "Funny you should ask," Rodighiero said, and pulled out her iPhone with a photo album to display her multi-colored bikini collection.

Once the Bikini Room began carrying her creations, Rodighiero's confidence soared and she added three more shops to her growing client list—Sweet



Kai Kini Bikini logo. Photo by Leo DuBois

Bikinis in Kapa'a, Kama'aina Surf and Sport in Lihue and South Shore Bikini in Koloa.

Presently, Rodighiero has one employee in training, with a dream of expanding her business horizon into a cinemascoppe version of South Pacific... and

that's probably a great place to sell bikinis.

Contact Kai Kini Bikinis at 808-634-3000; via email at taryn@kaikini.com; on facebook at www.facebook.com/Kai-Kini.Kauai. A website, kaikini.com, is under construction.

WilcoxHealthNews

Dr. Patrick Ogilvie Joins Medical Staff



Patrick Ogilvie, MD
Family Practice

Please welcome Dr. Patrick D. Ogilvie to the medical staff at Kaua'i Medical Clinic and Wilcox Memorial Hospital. He is a board certified Family Medicine physician with over 14 years of experience.

Before moving to Kaua'i, Dr. Ogilvie practiced at the Mark Reed Healthcare Clinic in McCleary, Washington where he was the Chief Medical Officer for the past two years. He recently received the Dr. John Anderson Memorial Award for Outstanding Rural Health Practitioner, awarded by the Washington Rural Health Association.

Dr. Ogilvie offers "whole person care, and care for the whole family." He also has a special interest in helping patients transition off pain medications. His office is located on the 3rd floor of the main clinic in Lihue, and patients may make an appointment by calling 245-1504.



A HEALTHY KAUAI IS OUR PRIORITY
245-1100 • info@wilcoxhealth.org • www.wilcoxhealth.org



WE BUY GOLD

Bring your broken or unused jewelry for free quotations and immediate payment. We'll pay even more when you use it toward new merchandise.

No Minimums

65th Year

Robert's
JEWELRY

LIHUE 2976 Kress St. 246-4653
"On the way to Hamura's Saimin"

"Kauai's Choice for Family Centered Care"

338-9431
4643 Waimea Canyon Dr.
Waimea, HI 96796



Kauai Veterans Memorial Hospital
(West Kauai Medical Center - Waimea)



BEST NURSING HOMES

Both our facilities are in Top 5 Nursing Homes in Hawaii, rated by
US News & World Report.



Samuel Mahelona Memorial Hospital
(Mahelona Medical Center - Kapaa)

822-4961
4800 Kawaihau Rd.
Kapaa, HI 96746



Facilities of Hawaii Health Systems Corporation

Lifestyles

from page 25

party dresses and costumes in bulk, brand new, and spends a lot of time on the Internet chasing down good deals. She's happy to help accessorize a packaged costume with the bazillion things she has on hand.

Cataluna can't help herself. A self-professed junkie for other people's stuff, she was raised on secondhand consignment.

"I wanted to do a cute shop appealing to the 14 to 30 crowd, juniors, working on a younger market having trendy, stylish fashion. I thought I'd like to give it a try and found it was something I'm really good at."

Above all, though, that big day in October sparks a fever in her.

"Halloween has always been my favorite holiday," she says. "I love dressing up, doing my house with giant spider webs, and I have always loved character play.

"Since I opened 14 years ago, I've had a lot of Halloween things, but then, about 10 years ago, Halloween became my priority. I think a lot of people are surprised at what they can find here—they assume you have to go online to get cool stuff.

"I put the word out there—try me first, you might be surprised at the type of things I carry here. I'm getting a reputation for saving the day."

Um, let's see. Oh, yes, a good example might be, say, you're going to a Goth wedding. What does Gloria have for you?

"Thank God, I've got vampire teeth," says Cataluna. "I have the good ones—you have to mold them onto your teeth, but they're reusable—just snap them off and reuse."

This is a place where no matter how young or how old you are, when you stumble through the doors, you're not meant to leave easily, nor empty handed.

"I don't care what age someone is," she says, "I have handbags, jewelry, gifts, so even if the clothes are too young, how about a pair of Manohlo Blahnik shoes or a

Coach handbag? Even guys can come in and shop and I'll gift wrap for them," she says.

Still, it's the costumes, and the Halloween season that get her excited. Thinking back to last Halloween, she decides a peacock costume was the most outrageous item she carried.

"We pieced together a lot of different looks, for example, scales to put on the leg, so mermaid decals looking like peacock feathers.

"This year, I'm anticipating A Black Swan rush, because of the movie. I'm beefing up my black tutu selection and more dark items, like bustiers, black masks, exotic eye kits.

"And of course, I carry hundreds of regular costumes—pirate,



Lifestyles Boutique offers many masks and wigs.
Photo by Gloria Cataluna

cat—most are definitely sexy, designed for a younger person headed for the clubs, and I can pretty well say the majority of winners of the costume contests there are ones outfitted here. I hear this from winners who come back and let me know, for example they've won \$200.

"But again, I have something for everyone."

To see it is to believe it. Visit Lifestyles Consignment Boutique located on Rice Street between City Liquor and Malama Pono Health Services. Life may never be the same. Contact: 245-9397 or glocat@hawaii.rr.com

A Sound Economy! And LOTS More!

**- Stay tuned for our Summer Promotions -
Win Bigger & Better Prizes than ever before!**

Spending decisions on Kauai are primarily made by the 25-64 and 35+ demographics:

Eastlan Listenership Study		
	25-64	35+
KONG Radio Group Totals	27,489	27,049
Group B	12,410	9,175
Group C	7,949	6,445

*Based on Eastlan Summer Surveys 2010 • Demo Listenership for Mon-Sunday 5am - Midnight

KONG's reach with Kauai's Consumers surpasses all other radio stations COMBINED!

Mahalo Kauai!

for KAUAI CALENDAR

For our complete listing of what's happening on Kaua'i, please visit www.forkauaionline.com

Free Calendar Listings on the web or in the monthly magazine. Send a brief description to editor@forkauaionline.com or call 338-0111.

SEPTEMBER HIGHLIGHTS

Friday, Sept. 2

Today is the registration deadline for an "Entrepreneurship in the Food Industry" course that will prepare students to plan and launch profitable businesses designed

to support Kaua'i's newly emerging food industry. The class will be held from 4 to 6:30 p.m. Mondays and Wednesdays, from Sept. 7 to Oct. 26, at Kaua'i Community College. Tuition is \$250. Financial assistance is available. Contact Dr. Glen Hontz at 246-4859 or hontz@hawaii.

edu. To request application forms call 245-8318.

Sunday, Sept. 4

The Sierra Club will offer a very strenuous 8-mile round-trip public hike along the Kalalau trail from Ke'e Beach to "space rock." Free. Call Jane Schmitt at 826-6105.

Sunday, Sept. 4

The third annual Kaua'i Marathon, with a 26.2-mile ultramarathon, 13.1-mile half marathon and four-person relay, is set for 6 a.m. to 1:30 p.m., with a finish party at Po'ipu Beach. Visit www.thekauaimarathon.com.

Sunday, Sept. 4

The Kaua'i Aloha Festivals, with a royal procession, hula and music, is set for 10 a.m. to noon at Smith's Garden Paradise in Wailua. Call 346-6924.



KAUAI FESTIVALS

www.kauaifestivals.com • 808-241-4946

Sponsored by the Hawai'i Tourism Authority and the County of Kaua'i

Saturday, Sept. 10

The Sierra Club will lead a moderate 3-mile public hike from Shipwreck Beach to Maha'ulepu to enjoy the sunset and an almost full moon over the ocean. Car shuttle for one-way hike. Call Judy Dalton at 246-9067.

Sunday, Sept. 11

The Sierra Club will lead a strenuous 3.5-mile round-trip public hike on the Honopu Trail in Koke'e, with panoramic views. Call Jane Schmitt at 826-6105.

Monday, Sept. 12

The Kaua'i Aloha Festival will

visit the Kaua'i Alive show, with music, hula, fire knife dance and more, from 8 to 9 p.m. at the Kaua'i Marriott Beach Resort. Tickets \$35 adults and \$25 children. Call 651-6202 for show only reservations or 245-5050 for dinner and show.

Kaua'i Business Directory

Call Barbara 338-0111 or Melinda 245-4648



GARDEN ISLAND SECURITY
Security professionals you can TRUST

LOCAL • FAMILY OWNED

Full Service Protection
365 Days a Year

(808) 245-3232 • (808) 645-1547
Toll Free: (866) 742-6647

Patrol & Contract Guard Service
License #GDA 541

www.gardenislandsecurity.com

**ServiceMASTER
Clean.**

The clean you expect.
The service you deserve.SM

You Clean the Kid.
We'll Clean the Carpet.

- Carpet & Upholstery Specialists
- Janitorial Cleaning
- Commercial Cleaning
- Residential Cleaning
- Disaster Restoration
- Fire/Smoke/Water
- Island-Wide

Call for a free estimate and hear more about our services.
www.wecleankauai.com **337-2080**



Want For Kaua'i?

To be added to the mailing list of
For Kaua'i

Free monthly magazine
call Barbara 338-0111
or email barbara@forkauaionline.com

**CAMOUFLAGE
ETC...**

9921 Waimea Road
(4 doors down from Waimea Post Office)

New & Surplus Military Clothing & Accessories (sizes up to 4XL)

- Ladies Camouflage Fashion
- Crochet Lei & Other Hand Crafted Items
- Kids Camouflage Clothing

338-0390

**DSI
DATASPACE
INDUSTRIES**



OPEN SOURCE SOLUTIONS
MAC & PC REPAIR
WEB DESIGN & HOSTING
WEB APPLICATION DEVELOPMENT

808 245 1695 www.dsi.gs

AVOID FORECLOSURE

A Short Sale may be the answer.
Know Your Options

Help with a loan modification or short sale.

Call for a **FREE CONSULTATION.**

Take Action Today

Find out if you qualify for HAFA
No Deficiency Lien & \$3,000 Relocation Assistance

www.kauaiavoidforeclosure.com

Ron Margolis RA

CERTIFIED DISTRESSED PROPERTY EXPERT

346.7095



HAWAII LIFE REAL ESTATE BROKERS

for KAUAI CALENDAR

Wednesday, Sept. 14

Women Empowering Women will host a fun and effective networking event with light pupu and door prizes from 5:30 to 7 p.m. at the Aston Aloha Beach Hotel. \$15. Contact cheri@wewnetwork.com or visit www.wewnetwork.com.

Wednesday, Sept. 14

The Sierra Club will lead an afternoon clean up of a 2-mile section of Waimea Canyon Road. Call Bob Nishek at 346-0476.

Thursday, Sept. 15

Robert Cazimero and Nina Kealiwahamana will perform in concert from 5 to 8 p.m. at the Kauai Museum. Call 245-6931.

Saturday, Sept. 17

The Sierra Club, Malama Maha'ulepu and Surfrider will team up for the Maha'ulepu Beach Clean Up in honor of the International Coastal Clean Up 25th Anniversary at 9 a.m. To join in, follow Po'ipu Road past the Hyatt and onto a dirt road. Turn right at the T-intersection and continue past the entry gate to parking area; look for banners. Bring hat and water; bags, gloves and refreshments provided. Call Jeff Vesci at 755-5587.

Saturday, Sept. 17

Nainoa Thompson, a veteran celestial navigator and voyager, will give a lecture on the voyaging canoe Hokulea, the

art of wayfinding and his Pacific voyaging adventures from 6 to 7 p.m. at the Kauai Museum. Call 245-6931.

Sunday, Sept. 18

The Sierra Club will lead a moderate 3.5-mile public loop hike connecting the Canyon Trail with an unmaintained trail in Koke'e. Stunning canyon views. Call Kathy Valier at 826-7302.

Sunday, Sept. 18

The Mokihana Festival's Hawaiian Instrumental Competition will be held from 6 to 9 p.m. at the Grand Hyatt Kauai Resort. Call 822-2166 or visit www.maliefoundation.org.

Monday, Sept. 19

The Mokihana Festival's Kauai Composers' Contest and Concert will be held from 7 to 10 p.m. at the Kauai Community College Performing Arts Center. Call 822-2166 or visit www.maliefoundation.org.

Thursday, Sept. 22

The Mokihana Festival's Solo/Group Hula Kahiko Nei competition will be held from 6 to 9:30 p.m. at the Kauai Beach Resort. Call 822-2166 or visit www.maliefoundation.org.

Friday, Sept. 23

The Mokihana Festival's Group Hula Auana Competition will be held from 6 to 9:30 p.m. at the Kauai Beach Resort. Call 822-2166 or visit www.maliefoundation.org.

Friday, Sept. 23-Sunday, Sept. 25

The Kauai Pow Wow, a Native American cultural celebration featuring persons from various tribes sharing their traditional dance styles, drum songs and handmade arts and crafts, is set for 4 to 9 p.m. Friday, 10 a.m. to 7 p.m. Saturday and 10 a.m. to 5 p.m. Sunday at the Kapa'a Ball Park. Free. Indian tacos and frybread will be sold. Call 828-1294.

Saturday, Sept. 24

The Mokihana Festival's Solo Hula Auana Competition and Finale will be held from noon to 5:30 p.m. at the Kauai Beach Resort. Call 822-2166 or visit www.maliefoundation.org.

Sunday, Sept. 25

Sheila Warnock, author of "Share the Care" will give a presentation from 3 to 4:30 p.m. at St. Michael's on how to set up caring teams in an initiative about expanding our sense of island family and willingness to volunteer in ways we like to help take care of our ill, disabled and dying who are without families and who are burning out and devastating their finances. Call Deborah Duda at 651-5395

Sunday, Sept. 25

The Sierra Club will lead a moderate 3-mile round-trip public hike on a forest trail that follows a river to Ho'opi'i Falls in Kapahi. Call Frank Whitman at 808-443-4315 or Judy Dalton at 246-9067.



- Independent Living Retirement Community
- Kauai's ONLY Assisted Living Facility
- All-inclusive apartment living with 24 hour safety and staffing, activities, meals and transportation
- Centrally located in Lihue



www.regencypuakea.com Call 808.246.4449 for a tour

Friday, Sept. 30

Midnight is the deadline for submitting written and visual entries in the Kauai Backstory writing contest, sponsored by Garden Island Arts Council. The theme is "coconut wireless." Cash prizes and reading in November. For details visit <http://kauai-backstory.com>.

Friday, Sept. 30-Sunday, Oct. 2

Kauai Sings Songs of the '70s, For more detail, go to malama-pono.org Performances will be on Friday and Saturday at 7 p.m.; and on Sunday at 5 p.m. Tix are \$20/advance; \$25/door/\$15/students. Buy tix online at http://www.malama-pono.org/KS_70s.aspx or call 246-9577.

Saturday, Oct. 1

The 5th Annual Coconut Festival 2011 takes place at the Kapa'a Beach Park next to the Kapa'a Library on Saturday from 9 a.m. to 5 p.m.; and on Sunday, 10 a.m. to 4 p.m. Non-stop entertain-

ment on a main stage, a keiki stage, cooking demonstrations by Kauai's best chefs, the largest gathering of Kauai artisans (featuring certified Kauai Made Vendors), crafters and Polynesian products, coconut games, pie eating contests, coconut cook-off contest, hands-on activities—and all things coconut

Ongoing Classes

Mondays

Nutan Brownstein teaches an atama yoga class sharing breath (prana) and exploring our being through dynamic asanas, meditative and intuitive movements at 5:30 p.m. at the Princeville Community Center. Call 808-826-4442.

Monday, Wednesdays & Fridays

Susan Dierker leads a yoga class suitable for all ages and stages of yoga, focusing on the breath and gentle stretching postures,

at 7:15 a.m. at the Princeville Community Center. \$5 per class. Call 639-4366.

Mondays & Thursdays

Donna Lei Kirkpatrick teaches intermediate hula for women, teens and keiki at the Princeville Community Center. Call 639-0862 for times.

Mondays & Fridays

Linda Pooley-Peck teaches a Pilates class with light cardio work and strength training with light weights, Pilates floor work and yoga stretches at 8:45 a.m. at the Princeville Community Center. \$10. Call 652-0363

Tuesdays

Diane Cline teaches a yoga class with 45 minutes of postures, deep healing and a meditation at the end at 8:15 a.m. at the Princeville Community Center. \$10. Call 480-244-7676.



GARDEN ISLAND RANGE & FOOD FESTIVAL

Sunday November 13th, 2011 • 11 am–2 pm

Kilohana Pavillion • \$35 Adults • Half Price Children • Free Under 5 Years
Tickets online at www.kauaifoodfestival.com
and ticket locations around the island. *Be a Locavore!*

Come and Taste the Difference!

Bringing the Cattlemen, Farmers and Chefs Together



*The Only Raft Company Touring
the Entire Na Pali Coast!*

Check out this Sea Cave!

Wow! The water was winter blue! We did the entire Na Pali coast with NAPALI RIDERS! Unbelievable! Waterfalls falling in the ocean, enchanting rainforest valleys, not to mention snorkeling with turtles and tropical fish! But that's not all...a spinner dolphin touched my hand in the water as it frolicked alongside the raft...best day of our vacation/lives!
Love, Susan & Ron

P.S. We have to keep looking at these photos to make sure it was real and a dream.

Na Pali Riders

P.O. Box 1082
Hanalei, Kauai, HI 96741
(808) 742-6331

To: *Bonnie & Steve Black*

See
Videos, Photos
and more on our
daily
Blog

Napaliriders.com
/blog

Na Pali Riders



Captain Chris of Na Pali Riders has the only raft company consistently touring the **ENTIRE 17 miles of the Na Pali Coast.***

*conditions permitting

Captain Chris says, "Touring the Na Pali Coast truly is a once-in-a-lifetime experience. We make sure that our passengers get to see it all including the famous sites of **Hanakoa Valley, Hanakapi'ai Valley, the Pirates Sea Cave,** and the **Double Door Cave.** These are some of the most significant attractions on the Na Pali Coast and should not be missed."

The Na Pali Riders' difference starts with attention to detail in all aspects of our Na Pali Coast Raft Tour. We offer a ride on our **state-of-the-art 30-foot, 920 Zodiac raft.**

Departures are from the West Side's **Kikiaola Harbor in Waimea, the closest harbor to the Na Pali Coast.** **Snorkeling** takes place at one of three different locations depending on currents, water clarity and conditions permitting. All beginning snorkelers have our experienced and knowledgeable crewmen as their **personal guides.**

The Na Pali Riders difference is unbelievable. **We are the only ones to guarantee satisfaction or you can go again FREE.** Call direct (808) 742-6331 for reservations. We also provide discounts for **Military, Kama'aina, and Groups.**



"Natures Disneyland!"

-Jane Emery
LA Splash Magazine

photo: Erik Van Enbden

Explore Sea Caves



photo: Erik Van Enbden

Double Door Cave



photo: Erik Van Enbden

Dolphins!



photo: Erik Van Enbden

808.742.6331

www.napaliriders.com • napali@hotmail.com

facebook

Visit "Na Pali Riders" fan page for current photos and videos.